

# Rittal – The System.

Faster – better – everywhere.

## Cable duct – TS 8800.751

Date : Nov 29, 2019

ENCLOSURES

POWER DISTRIBUTION

CLIMATE CONTROL

IT INFRASTRUCTURE

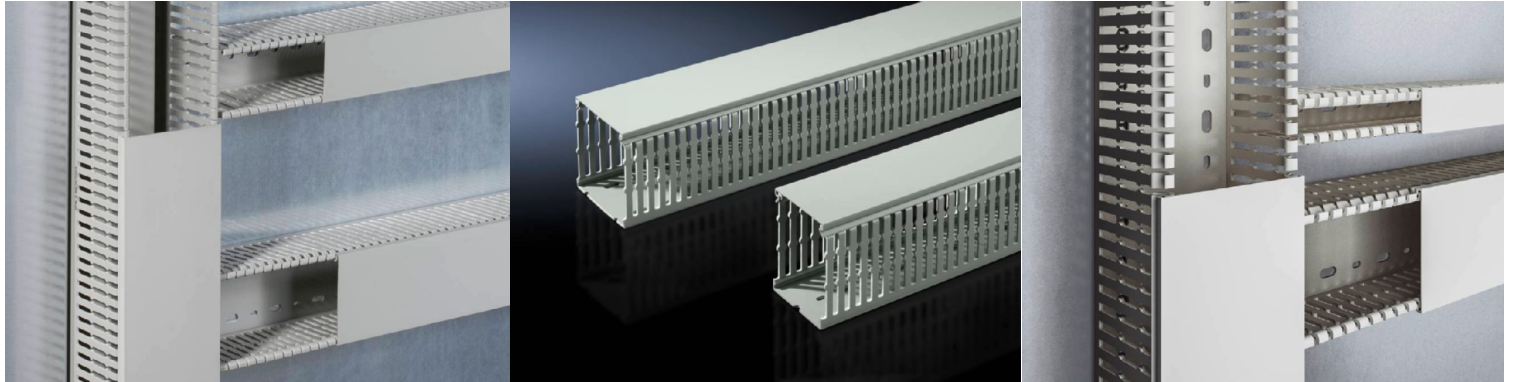
SOFTWARE & SERVICES

FRIEDHELM LOH GROUP



# Cable duct – TS 8800.751

created: 29.11.2019 build on www.rittal.com/uk-en



## Product description

<b>Design:</b>	for mounting plates
<b>Description:</b>	With special DIN punchings for direct mounting on the enclosure section or on surfaces such as mounting plates.
<b>Material:</b>	Hard PVC Flame-resistant, self-extinguishing Temperature resistant to +60 °C
<b>Colour:</b>	Similar to RAL 7030
<b>Supply includes:</b>	Cable duct with cover
<b>Note:</b>	Can be shortened for other dimensions.

## Product features

<b>Dimensions:</b>	Width: 40 mm Depth: 80 mm Length: 2000 mm
<b>Installation options:</b>	With special DIN punchings for direct mounting on the enclosure section or on surfaces such as mounting plates If the mounting plate is installed flush with the enclosure frame at the rear (installation position $\pm 0$ mm), the horizontally mounted cable ducts are aligned with the cable ducts mounted on the enclosure section. Cable duct 50 mm wide for individually sited VX25 enclosures with side panel on the vertical section, on the left and right adjacent to the mounting plate. Cable duct 100 mm for mounting on the vertical enclosure frame with bayed enclosures. To fit the cable ducts for vertical TS sections. If the TS mounting plate is installed in the rearmost position, the horizontally mounted cable ducts are flush with the vertical ones.

For external mounting on surfaces.

<b>Bar width:</b>	5.5 mm
<b>Slot width:</b>	4.5 mm
<b>Packs of:</b>	20 pc(s).
<b>Weight/pack:</b>	24.18 kg
<b>Copper weight (kg per piece):</b>	0
<b>EAN:</b>	4028177445451
<b>Customs tariff number:</b>	39259020
<b>ETIM 7.0:</b>	EC000012
<b>ETIM 6.0:</b>	EC000012
<b>eCl@ss 8.0/8.1:</b>	27400703
<b>eCl@ss 6.0/6.1:</b>	27400703
<b>Product description:</b>	TS Cable duct for mounting plate, WHD: 40x2000x80 mm
<b>Approvals</b>	
<b>Certificates:</b>	EAC